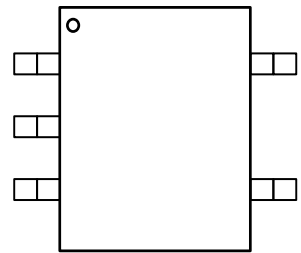
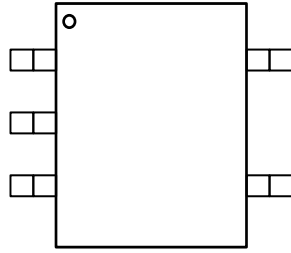
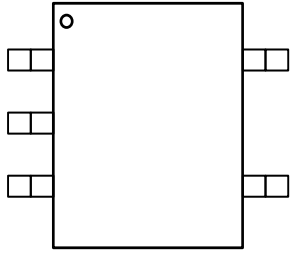


## 1.7V-6V Vin, 500mA, 8uA I<sub>Q</sub>, Low-Dropout Regulator

---

				5	Tape & Reel, 3000
				5	Tape & Reel, 3000
				5	Tape & Reel, 3000
				5	Tape & Reel, 3000
				6	Tape & Reel, 3000
				6	Tape & Reel, 3000
				6	Tape & Reel, 3000
				8	Tape & Reel, 5000
				5	Tape & Reel, 3000
				6	Tape & Reel, 3000






5

B









---

--	--	--	--	--


---

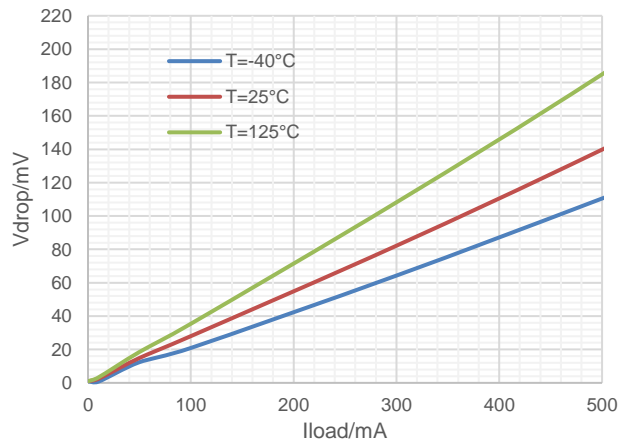
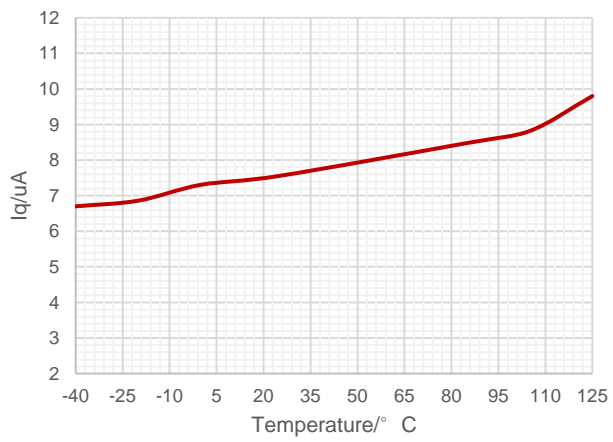
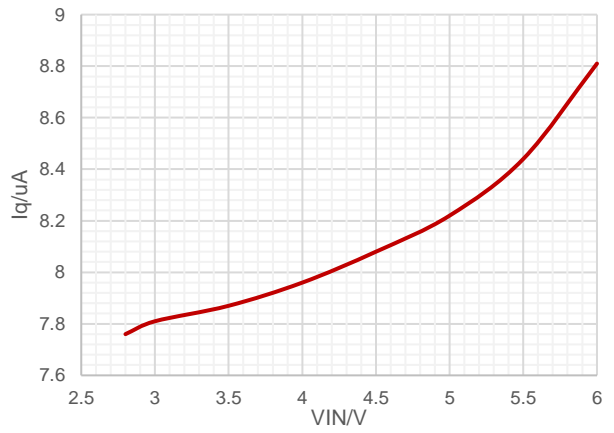
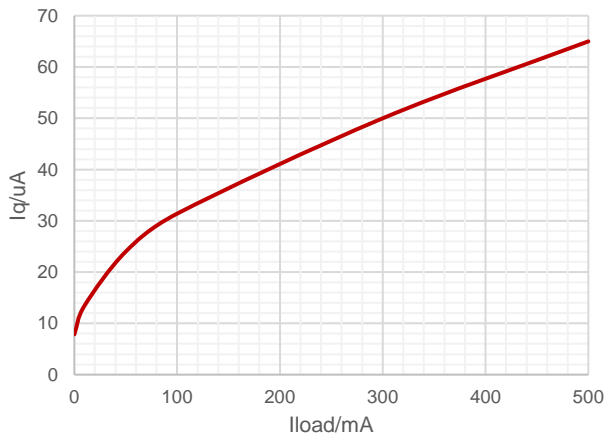
---



---

(2)

(3)



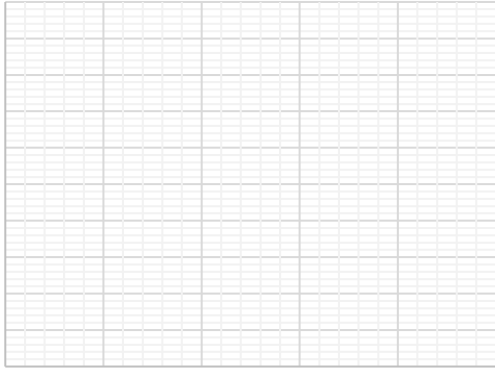


Figure 8. Shutdown Current vs Ambient Temperature

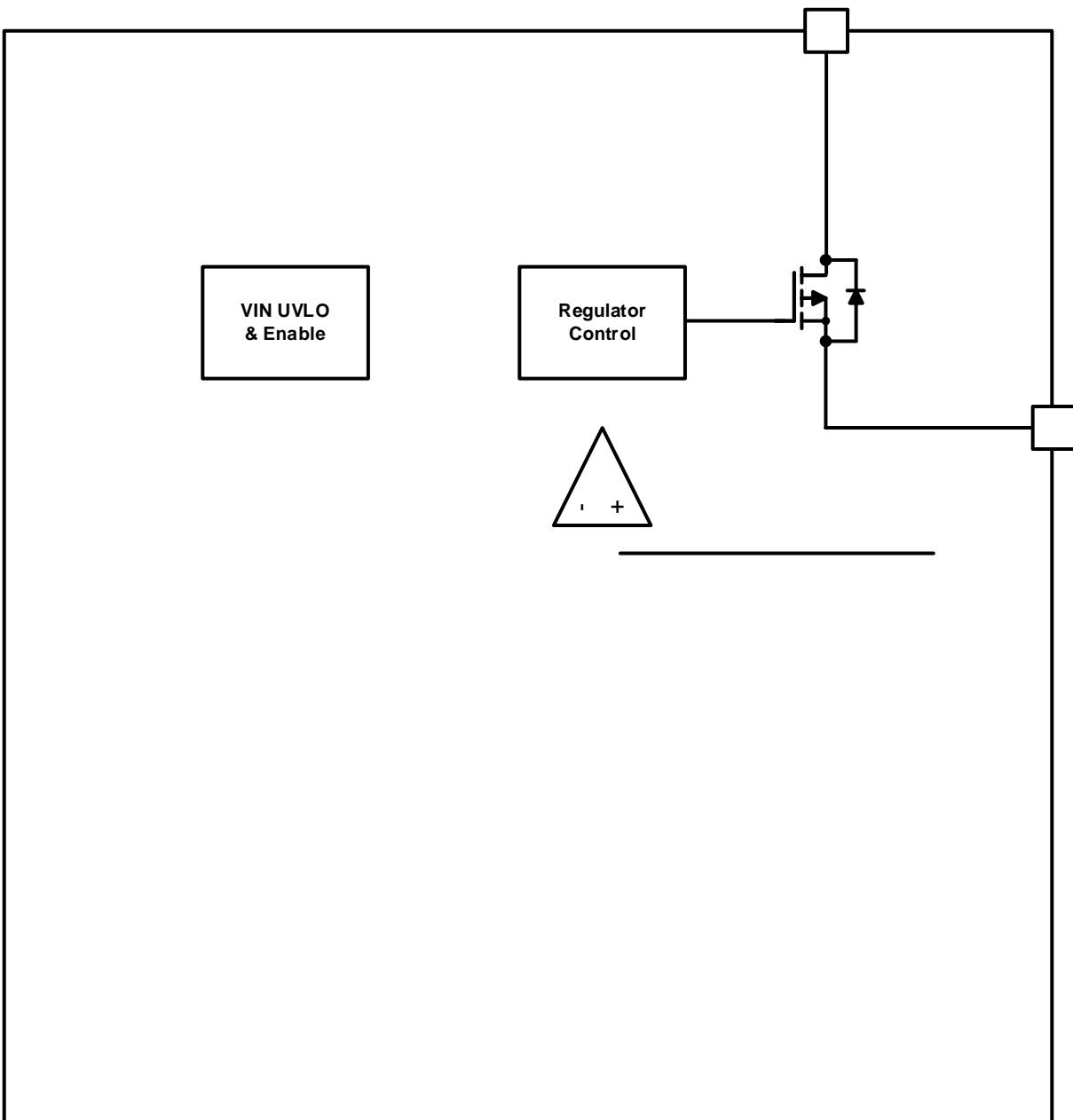
Figure 9. Output Current Limit vs Ambient Temperature

Figure 10. Short Current Limit vs Ambient Temperature



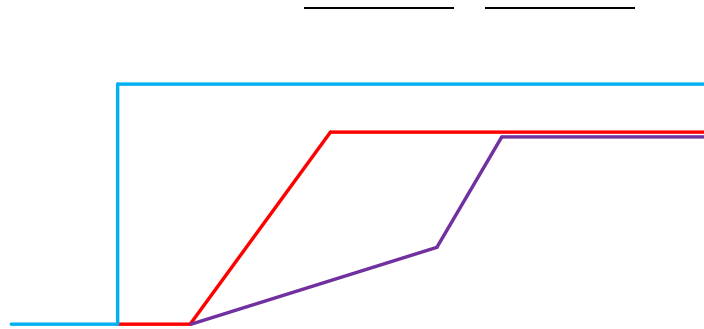
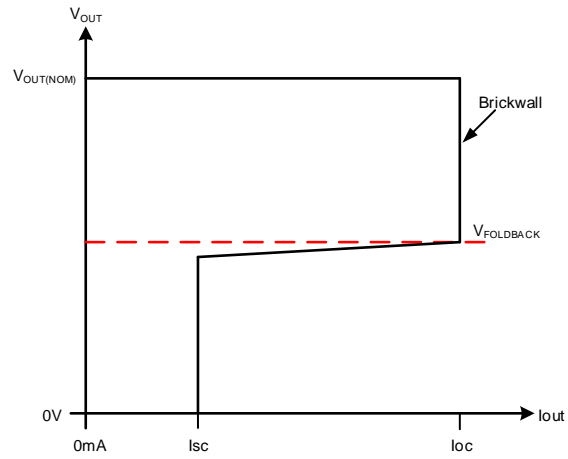
---

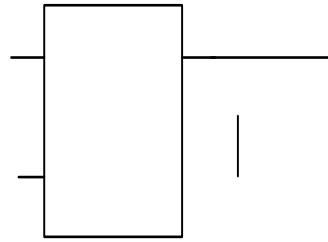
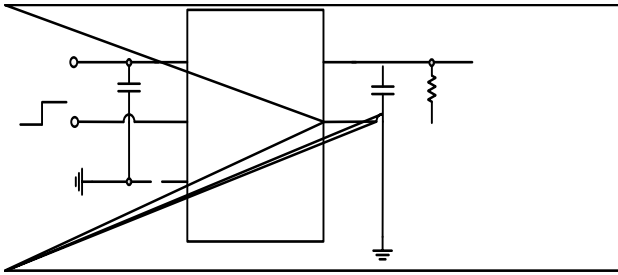
---

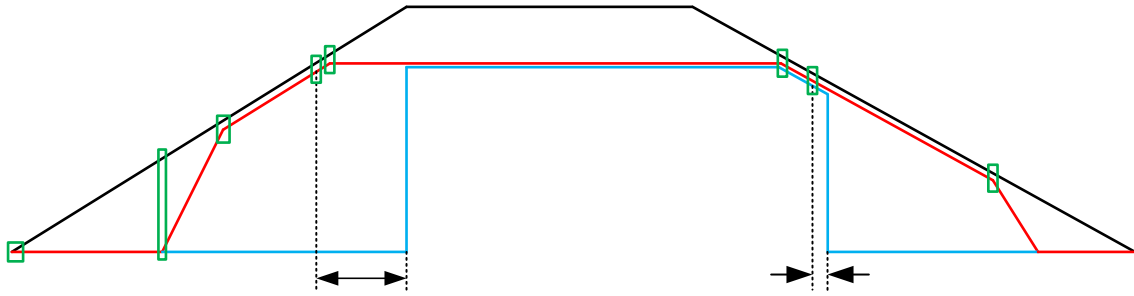


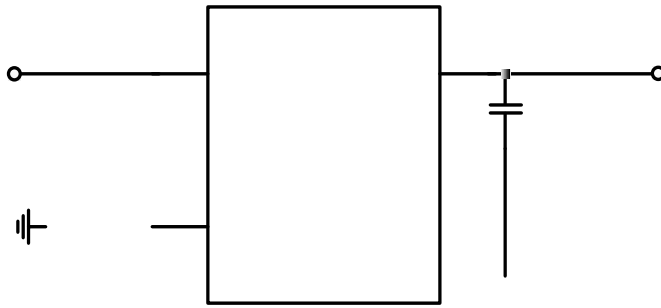
---

The SCT71005Q product provide adjustable output which can adjust the output voltage from 0.5V to 5V.





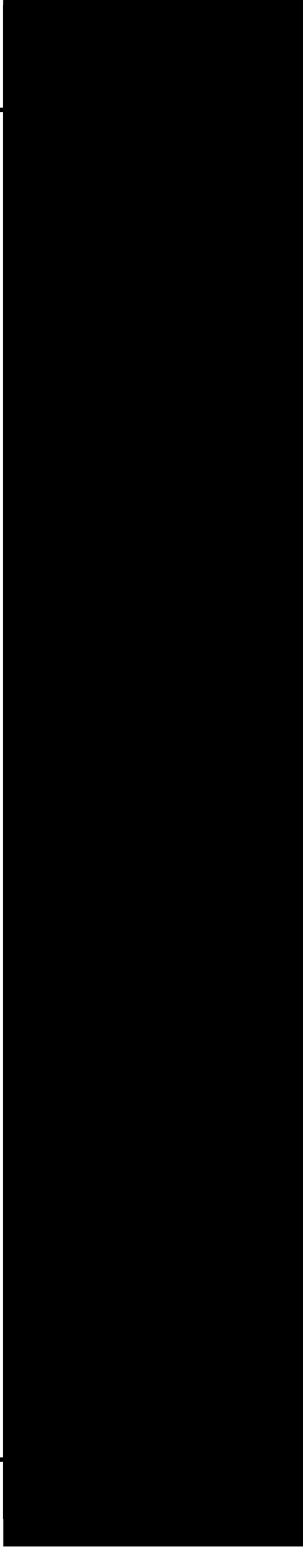





---

---

---

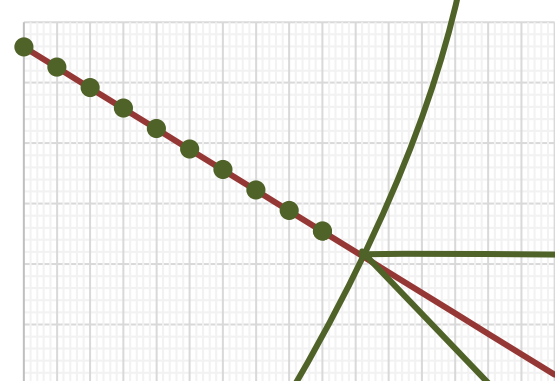
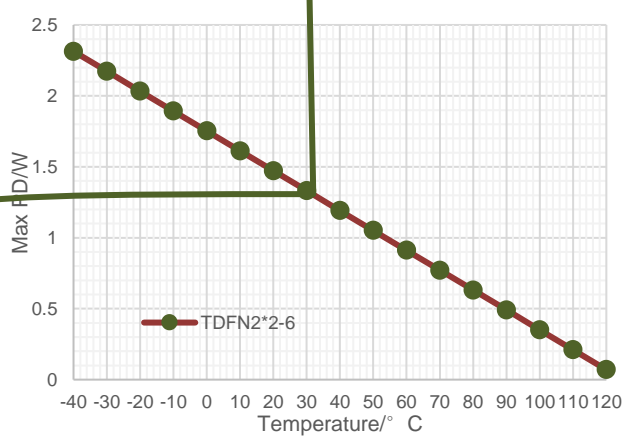
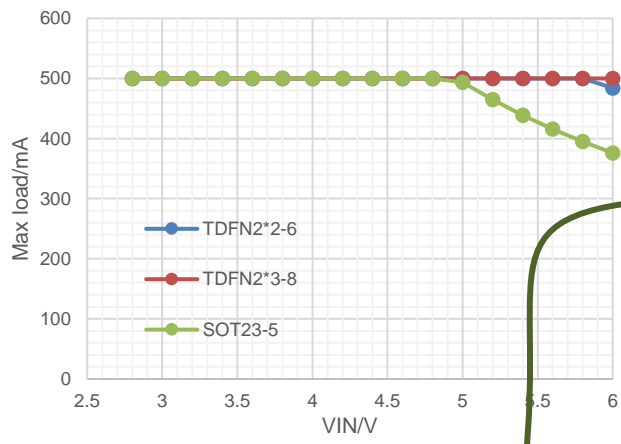


---













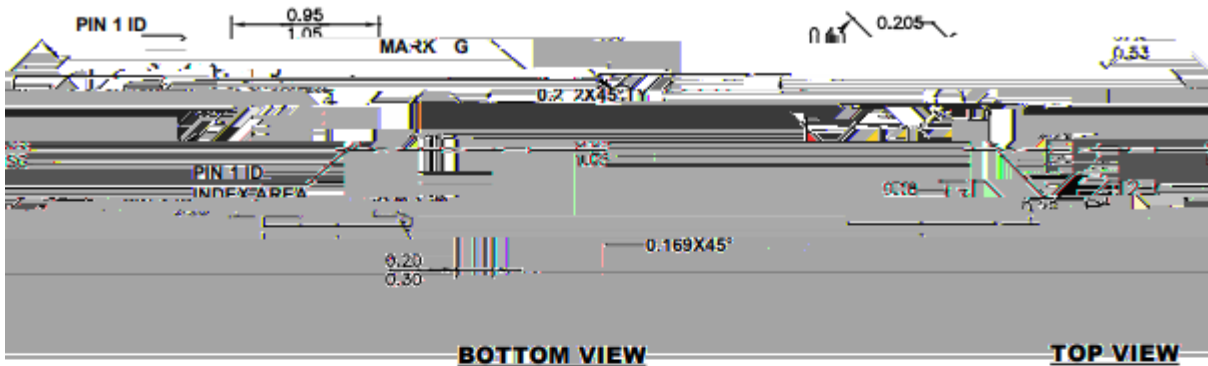










0.20

**NOTE:**

1) ALL DIMENSIONS ARE IN MILLIMETERS.

0.48

- 1.
- 2.
- 3.
- 4.
- 5.
- 6.



---

